

Based on a **power relationship**, sexual violence is fed by several systems of discrimination. By giving greater power to some people, these **mechanisms of social exclusion create contexts of vulnerability** which place some women at greater risk of violence. This includes, for example, women with a precarious immigration status, women with functional limitations, and/or women targeted by racist and colonialist prejudices against their identity and/or prejudices against their sexual orientation. For all women, and particularly for these groups, sexual assault is a **form of social control**, aiming to keep them in fear and unequal power relations.

Journée d'action
**CONTRE LA VIOLENCE
 SEXUELLE FAITE AUX FEMMES**



Sexual assault is defined as an act of domination mainly committed by men against women and children.

We're fed up with risk factors placing women in contexts of vulnerability to sexual violence.

LET'S TAKE UP THE CHALLENGES!



We're fed up with risk factors placing women in contexts of vulnerability to sexual violence.

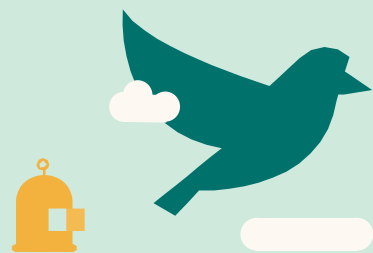
From isolation to a social network based on solidarity



- Help develop respectful social networks
- Encourage collective measures to build solidarity
- Encourage social engagement and activism

LET'S TAKE UP THE CHALLENGES!

From dependence to autonomy



- Encourage action and change
- Allow autonomous decision-making
- Emphasize strengths and achievements and provide information about existing resources

From discrimination to a just and equitable society



- Dismantle myths and prejudices
- Research and circulate accurate and clear information
- Engage in social struggles

#UsToo

#WeBelieveYou